



OLYMPIC CYLINDER MOWERS OPC 400 SERIES

<u>Mower</u>	<u>Model</u>	<u>Engine</u>	<u>Shaft Dia</u>	<u>Start Year</u>	<u>From Serial #</u>
419026	400 - PRR	B&S 3.5 I/C	19	Dec 2007	7091925
419036	400 - RRR	B&S 3.5 I/C	19	Jun 2010	7318620
419043	400 - PRR	Honda GX160	20	May 2010	7311104
419044	400 - RRR	Honda GX160	20	Mar 2009	7199092
419057	400 - PRR	Honda GC160	20	Apr 2011	7421017
419058	400 - RRR	Honda GC160	20	Aug 2010	7333156
419090	400 - PRR	B&S 3.5 I/C	19	Jan 2011	7412506

PRR = Cylinder Mowers fitted with a painted Rear Roller
RRR = Cylinder Mowers fitted with a Rubber Sleeve over the painted Rear Roller

Photo shows 019026



Upturned Style Handle Used On:
019090



Photo shows 019043



Not Illustrated

031887	Decal, Caution S/N & dB 400	1
031890	Decal, Trans Cover 400	1
031893	Decal, G/Catcher 400	1
031900	Decal, Caution, Feet & Hands	1
571100	Decal, Power Drive	1
031992	Owner Manual, Reel Mower	1
537967	Washer-Rear Axle (If required)	3
Honda Engine's require		
503630	Screw, S/Tapping 10 x .4	2
503950	Deflector- Honda Engine	1
Honda- Throttle Cable Routing Change TB129 (Released December 2012)		
503489	Screw, Set M5 x 16	1
550500	Clamp- Cable, Throttle Adapter	1

732209

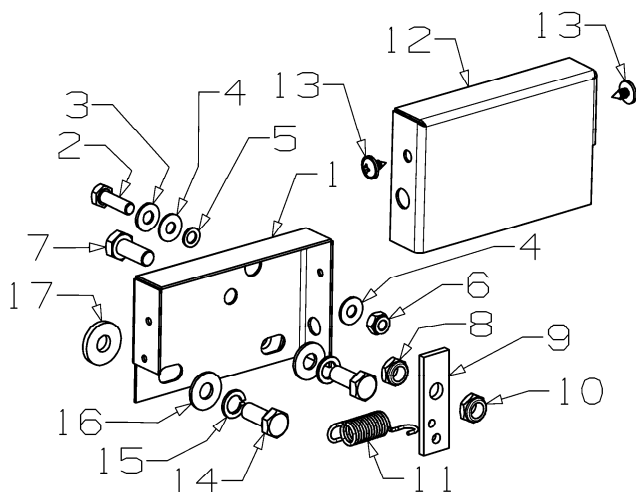
Catcher Assy, 400 Green



SPARES OPTION

732181	Slow Down Kit	1
---------------	---------------	----------

OPC Safety Cut Out Assy

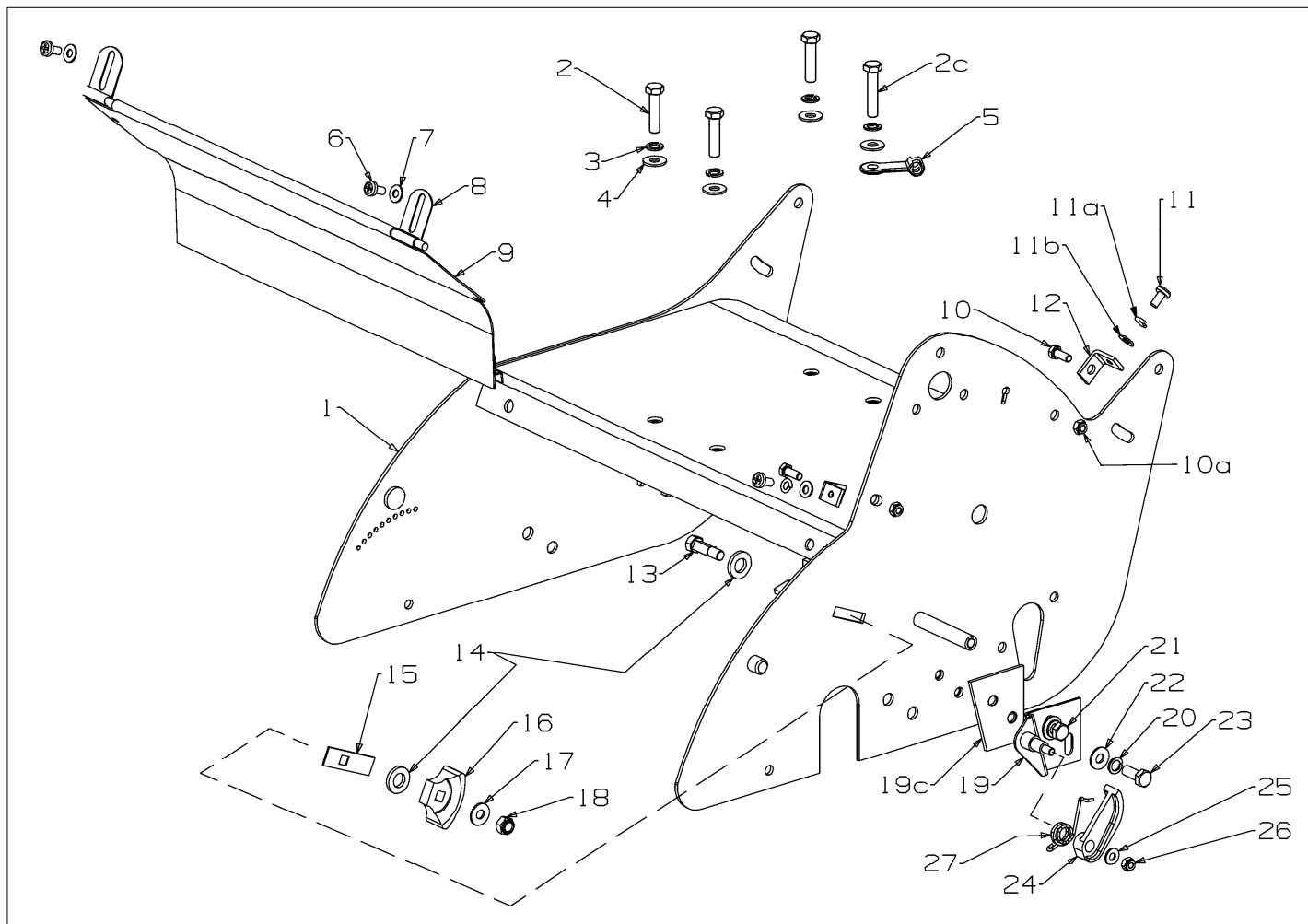


Item	Part No	Description	Qty
1	031880	Safety Switch Housing	1
2	501600	Screw, Set M6 x 20 Hex	1
3	501703	Washer, Flat M6 x 14 x 1.2	1
4	031884	Washer, Fibre M6 x 14 x 1	2
5	031883	Washer, Fibre M6 x 10 x 1	1
6	501764	Nut, M6 Nyloc x 6mm thick	1
7	501597	Screw, Set M8 x 20 Hex	1
8	503831	Nut, M8 Nyloc x 6mm thick	1
9	031885	Safety Switch Lever Arm	1
10	503831	Nut, M8 Nyloc x 6mm thick	1
11	031886	Spring	1
12	031881	Safety Switch Cover	1
13	580540	Screw, S/Tapping M5 x 10 POZ	2
14	501116	Screw, Set NF 5/16" x .75 Hex	1
15	503747	Washer, Spg 8	1
16	501606	Washer, Flat 8 x 19 x 1.6	1
17	503872	Washer, Flat 8 x 20 x 3.0	1

(Item 17 Washer used only on B&S Engines)

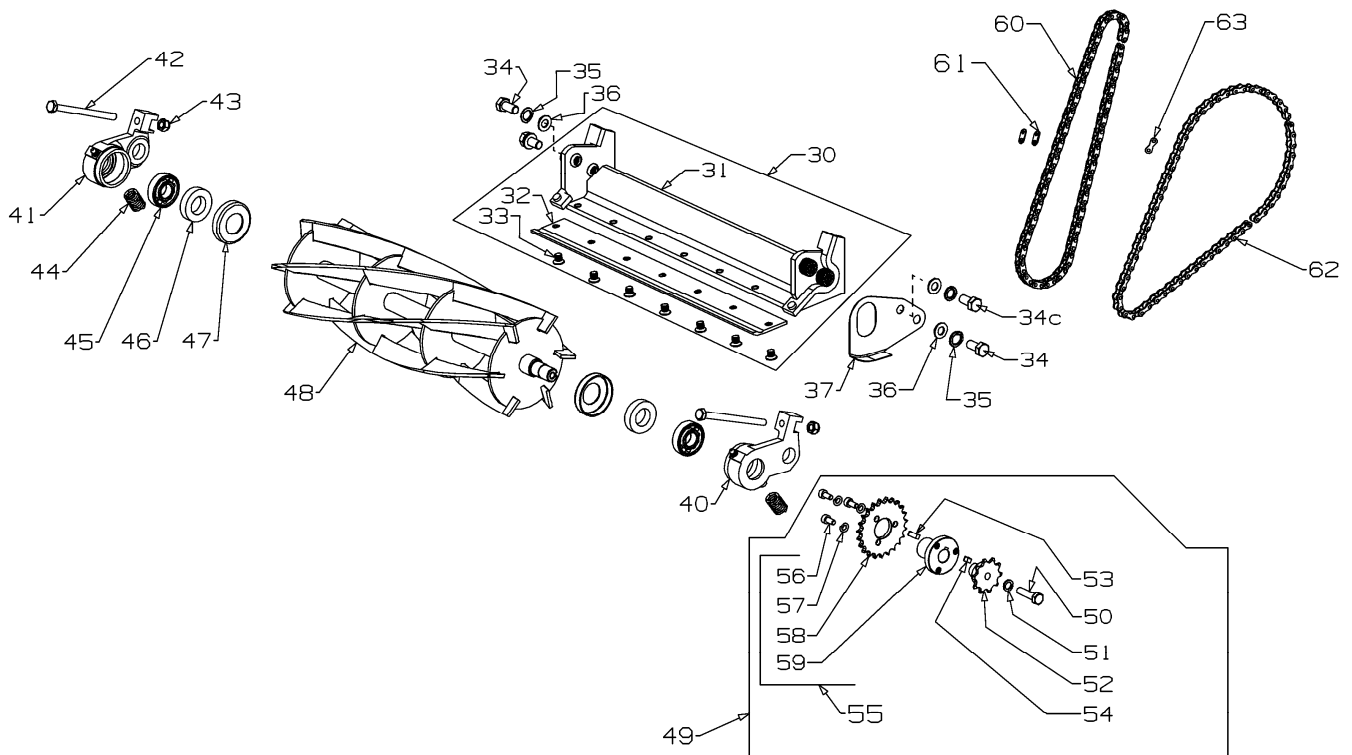
Not Illustrated

031906	Safety Switch Loom B&S	1
(Fit spade onto item 2 prior to assembly)		
031882	Safety Switch Loom Honda	1
(Fit spade onto item 2 prior to assembly)		



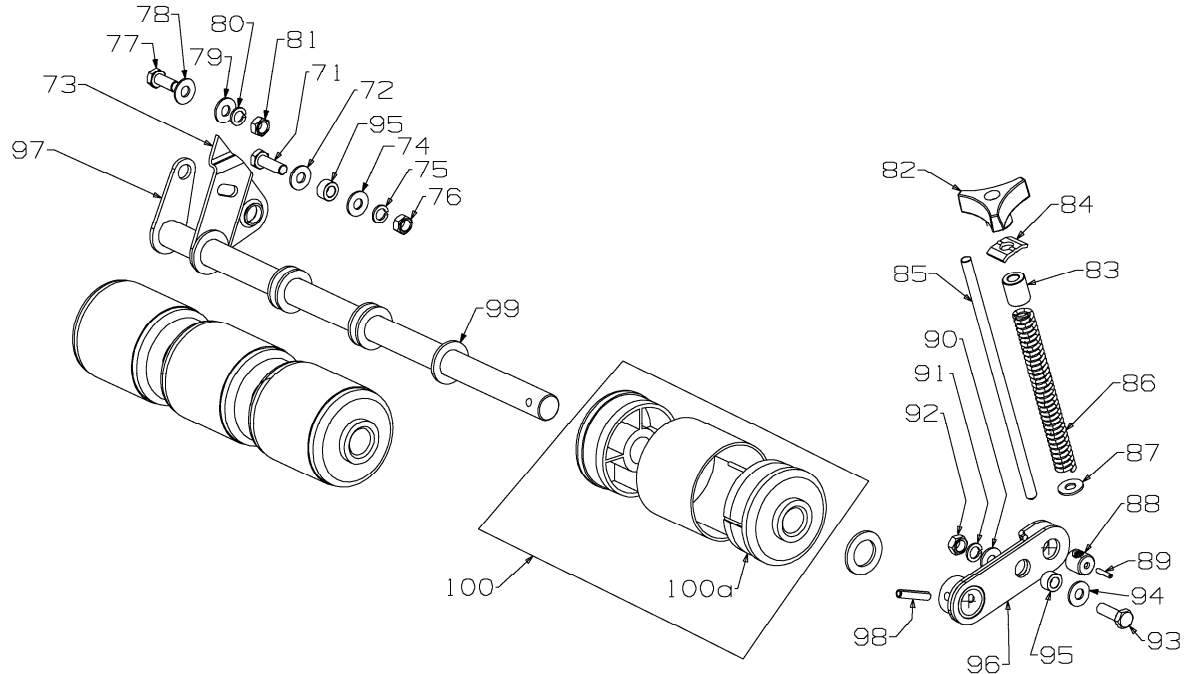
Item	Part No	Description	Qty	Item	Part No	Description	Qty
1	031580	Chassis Assy- 400 Green	1	15	002845	Sealplate- Chain Adjuster	1
2	501716	Set Screw, M8 x 35 Hex HT	3	16	002844	Adjuster- Chain, Fixed Nylon	1
2c	501843	Set Screw, M8 x 40 Hex	1	17	501606	Washer, Flat 8 x 19 x 1.6	1
3	503747	Washer, Spg 8	4	18	501793	Nut, M8 Hex Nyloc x 8mm thick	1
4	501606	Washer, Flat 8 x 19 x 1.6	4	19	004942	Plate Assy, Mounting	1
5	581527	Retainer, Clutch Cable	1	19c	032250	Plate- Spacer, Chain Align	1
6	503591	Screw, Pan M6 x 12	2	20	503747	Washer Spg 8	2
7	501703	Washer, Flat 6 x 14 x 1.2	2	21	501571	Set Screw, M8 x 16 Hex	1
8	002589	Bracket, Grass Chute	2	22	501606	Washer, Flat 8 x 19 x 1.6	2
9	008900	Deflector- Grass, 400 Black	1	23	501571	Set Screw, M8 x 16 Hex	1
10	501702	Set Screw, M6 x 16 Hex	2	24	004963	Adjuster- Chain, Tension Nylon	1
10a	501764	Nut, M6 Hex Nyloc x 6mm thick	2	25	501703	Washer, Flat 6 x 14 x 1.2	1
11	503591	Screw, Pan M6 x 12	2	26	501764	Nut, M6 Hex Nyloc x 6mm thick	1
11a	500201	Washer, Spg 6	2	27	004945	Spring	1
11b	501703	Washer, Flat 6 x 14 x 1.2	2				
12	031915	Bracket- Chain Cover	2				
13	002848	Bolt- Adjuster, Chain	1				
14	006028	Washer, Flat 12 x 22 x 3.0	2				

When ordering spares: PLEASE QUOTE PART NUMBER & Description, NOT illustrated number. Item Qty = 1 per part unless stated differently. **BOLD TEXT** = Assemblies. Text starting with * = items included in the assemblies & may not be available as a spares item. Determine the left hand or right hand sides by standing in the operating position (standing at the handle).



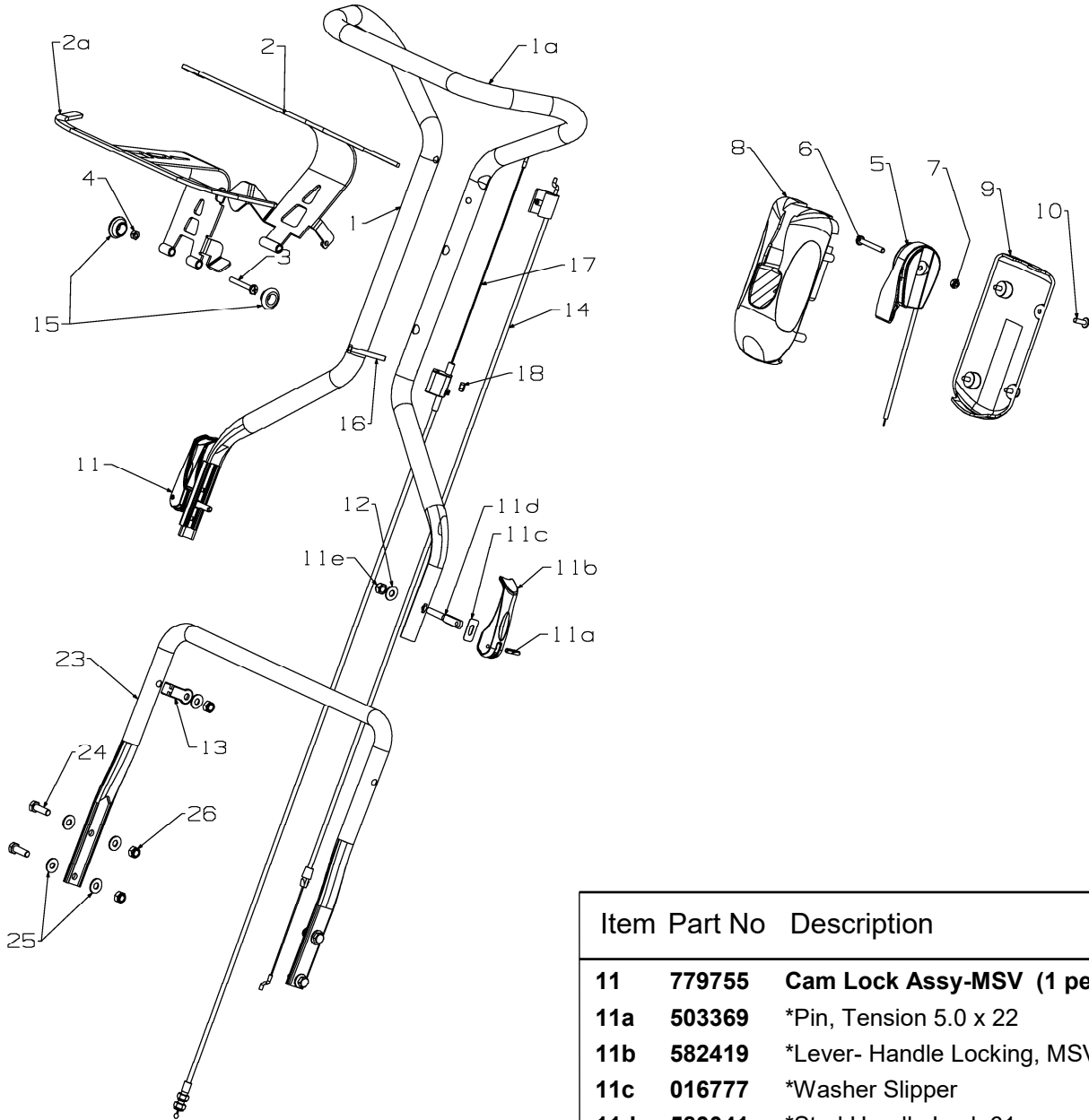
Item	Part No	Description	Qty	Item	Part No	Description	Qty
30	009853	Back plate Brkt, Blade Assy 400 (includes items,31,32,33)	1	49	032006	Sprocket Assy-10/23 (includes items 50,51,52,53,54 and 55)	1
31	*009861	Bracket Assy Back plate 400	1	50	*301345	Set Screw, M8 x 45HT	1
32	*009872	Blade, Baseplate 400	1	51	*503747	Washer Spg 8	1
33	*008611	Screw, CSK M8 x 10 Allen Head	7	52	*032002	Sprocket 10T	1
34	501760	Set Screw, M10 x 20 Hex	3	53	*032005	Key 5 x 5 x 16	1
34c	501760	Set Screw, M10 x 20 Hex	1	54	*032004	Key 5 x 5 x 10	1
35	503897	Washer, Spg 10	4	55	*032045	Sprocket Assy - 23 Key (includes items 56,57,58 and 59)	1
36	501704	Washer, Flat 10 x 19 x 1.6	4	56	*502004	Screw, Cap M6 x 12	3
37	002561	Plate- Seal, Chain case	1	57	*500201	Washer, Spg 6	3
40	032023	Housing- Assy Bearing, LH	1	58	*032003	Sprocket 23T	1
41	032024	Housing- Assy Bearing, RH	1	59	*032001	Boss Sprocket Key	1
42	006282	Bolt, Set NF 5/16" x 4" Hex	2	60	002835	Chain- 0.23xP 3/8", 75P	1
43	007240	Nut, NF 5/16 Hex Nyloc Type "P"	2	61	*731972	Link- Chain 3/8"	1
44	002581	Spring- Baseplate	2	62	004299	Chain- 0.205x P 1/2", 59P	1
45	503273	Bearing, Ball 17x40x12 6203 2S	2	63	*731971	Link- Chain 1/2"	1
46	002583	Seal- Felt	2				
47	005211	Cover- Dust, Cylinder Bearing	2				
48	032013	Cylinder Assy Cutting-400, Keyed	1	932087	*Cylinder & Sprocket Assembly 400 (Includes items 48 & 49)	1	
							*This assembly is designed to replace the earlier style of Cutting Cylinder that used a 5/8 UNF LH thread to attach the sprocket assembly.

When ordering spares: PLEASE QUOTE PART NUMBER & Description, NOT illustrated number. Item Qty = 1 per part unless stated differently. **BOLD TEXT** = Assemblies. Text starting with * = items included in the assemblies & may not be available as a spares item. Determine the left hand or right hand sides by standing in the operating position (standing at the handle).



Item	Part No	Description	Qty	Item	Part No	Description	Qty
70	005013	Spindle & Bracket Assy 400	1	87	*501606	Washer, Flat 8 x 19 x 1.6	1
71	*501598	Set Screw, M8 x 25 Hex	1	88	*004990	Spindle, Trunnion	1
72	*501606	Washer, Flat 8 x 19 x 1.6	1	89	*032087	Pin, Tension 3.0 x 16	1
73	*004983	Bracket- Front Roller, RH	1	90	*501606	Washer, Flat 8 x 19 x 1.6	1
74	*501606	Washer, Flat 8 x 19 x 1.6	1	91	*503747	Washer, Spg 8	1
75	*503747	Washer, Spg 8	1	92	*501602	Nut, M8 Hex	1
76	*501602	Nut, M8 Hex	1	93	*501598	Set Screw, M8 x 25 Hex	1
77	*501597	Set Screw, M8 x 20 Hex	1	94	*501606	Washer, Flat 8 x 19 x 1.6	1
78	*501606	Washer, Flat 8 x 19 x 1.6	1	95	*004991	Bush- Pivot, Front Roller	2
79	*501606	Washer, Flat 8 x 19 x 1.6	1	96	*004984	Bracket Assy- Adj, Front Roller	1
80	*503747	Washer, Spg 8	1	97	*004976	Spindle Assy- Front Roller 400	1
81	*501602	Nut, M8 Hex	1	98	*007496	Pin, Tension 6.0 x 30	1
82	*574230	Knob- Plastic, M8 Insert	1	99	*501432	Washer, Flat 20 x 33 x 4.0	8
83	*031910	Spacer- Knob	1	100	031911	Roller- Front Assy (1 Only)	4
84	*004973	Plate- Slipper	1	100a	**005478	Cap- End 72.3	2
85	*004988	Spindle- Adj, Front Roller	1				
86	*004691	Spring- Height Adjust	1				

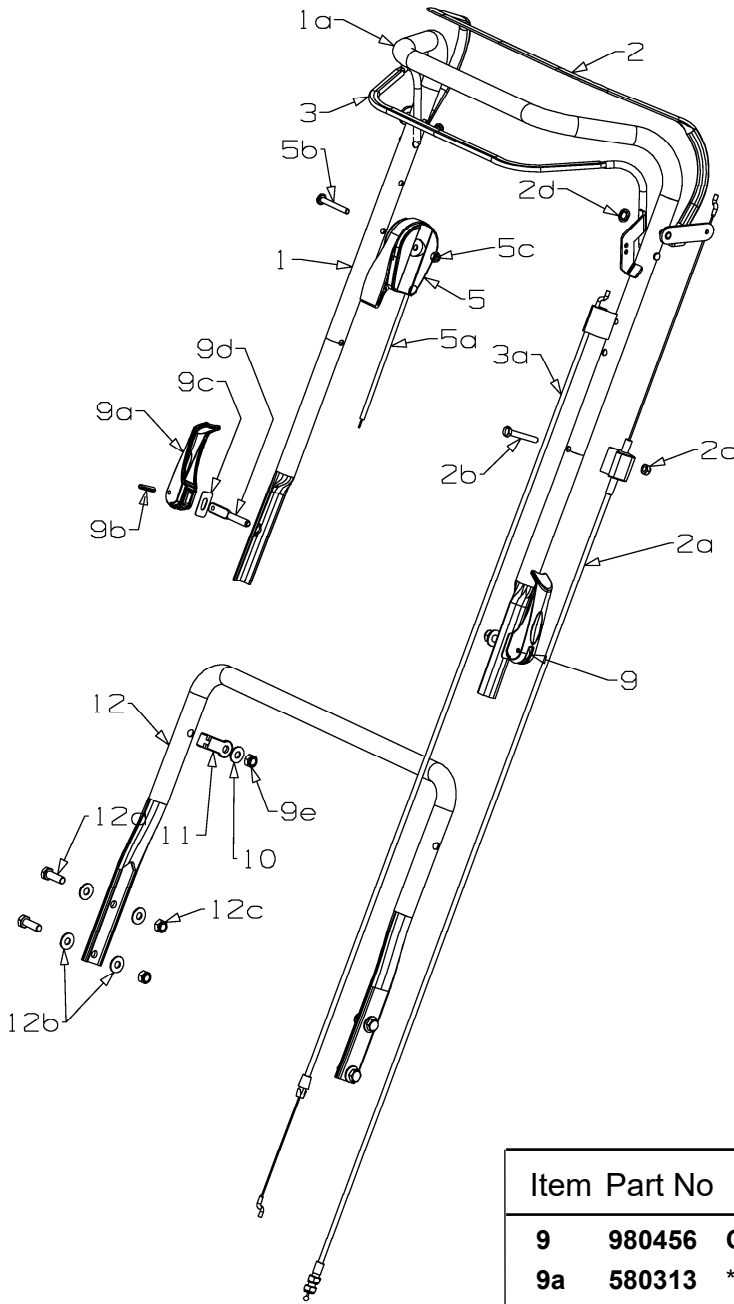
When ordering spares: PLEASE QUOTE PART NUMBER & Description, NOT illustrated number. Item Qty = 1 per part unless stated differently.
BOLD TEXT = Assemblies. Text starting with * = items included in the assemblies & may not be available as a spares item.
 Determine the left hand or right hand sides by standing in the operating position (standing at the handle).



Item	Part No	Description	Qty
11	779755	Cam Lock Assy-MSV (1 per)	2
11a	503369	*Pin, Tension 5.0 x 22	1
11b	582419	*Lever- Handle Locking, MSV	1
11c	016777	*Washer Slipper	1
11d	583041	*Stud Handle Lock 61mm	1
11e	501793	*Nut M8 Hex Nyloc x 8mm thick	1
12	501606	Washer, Flat 8 x 19 x 1.6	2
13	581527	Retainer, Clutch Cable	1
14	581655	Cable- Engine, OPC 925mm	1
15	503882	Grommet Blanking 3/4"(19mm)	2
16	580160	Screw-Set, M6 x 50	1
17	031990	Cable-Clutch, Reel Mower	1
18	501764	Nut, M6 Hex Nyloc x 6mm thick	1
23	031848	Handle- Lower, 400	1
24	501597	Screw, Set M8 x 20	4
25	501606	Washer, Flat 8 x 19 x 1.6	8
26	501793	Nut, M8 Hex Nyloc x 8mm thick	4

Item	Part No	Description	Qty
1/1a	731847	Handle & Sleeve, MSVSFT	1
2	979279	Bail Arm Assy, SP MSV RED	1
2a	979278	Bail Arm Assy, OPC MSV RED	1
3	503883	Bolt Hex M8 x 100	1
4	501793	Nut, M8 Hex Nyloc x 8mm thick	1
5/5a	583458	Throttle Ctrl & Cable, Wescon	1
6	503604	*Screw, Pan M6 x 45	1
7	501764	*Nut, M6 Hex Nyloc x 6mm thick	1
8	983351	Mount Throttle, Top MSV	1
	583442	*Mount Throttle, Top Plain	1
9	583340	Cover Throttle Bottom	1
10	503650	Screw; S/T #12 x 11/16"	4

When ordering spares: PLEASE QUOTE PART NUMBER & Description, NOT illustrated number. Item Qty = 1 per part unless stated differently. **BOLD TEXT** = Assemblies. Text starting with * = items included in the assemblies & may not be available as a spares item. Determine the left hand or right hand sides by standing in the operating position (standing at the handle).

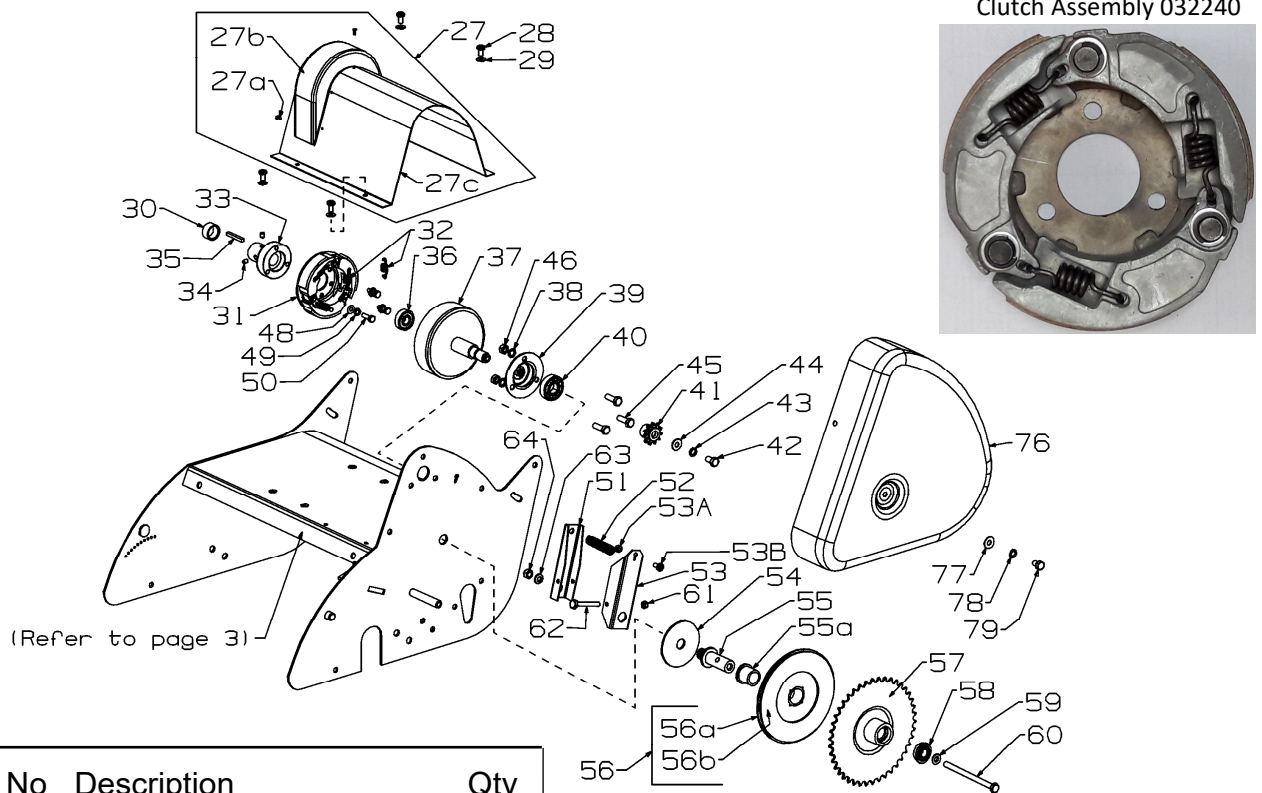


Note, this handle is used on:
019090 R/MWR 400 Green

Item	Part No	Description	Qty
9	980456	Cam Lock Assembly (1 per)	2
9a	580313	*Lever- Handle Locking	1
9b	503369	*Pin, Tension 5.0 x 22	1
9c	016777	*Washer- Slipper S/S	1
9d	580690	*Stud- Handle Lock, 64mm	1
9e	501793	*Nut, M8 Hex Nyloc x 8mm thick	1
10	501606	Washer, Flat 8 x 19 x 1.6	2
11	581527	Retainer- Clutch Cable	1
12	031848	Handle- Lower, Reel Mower 400	1
12a	501597	Screw, Set M8 x 20 Hex	4
12b	501606	Washer, Flat 8 x 19 x 1.6	4
12c	501793	Nut, M8 Hex Nyloc x 8mm thick	4

Item	Part No	Description	Qty
1/1a	773155	Handle & Sleeve R/MWR SFTBLK	1
2	982161	Bail Arm Assy, SP	RED 1
2a	031990	Cable- Clutch, Reel Mower	1
2b	503604	Screw, Pan M6 x 45	1
2c	501764	Nut, M6 Hex Nyloc x 6mm thick	1
2d	501365	Clip- Starlock, 5/16"	2
3	981740	Bail Arm Assy, OPC	RED 1
3a	031878	Cable- Eng, OPC Reel Mower	1
5/5a	583458	Throttle Ctrl & Cable Wescon	1
5b	503604	*Screw, Pan M6 x 45	1
5c	501764	*Nut, M6 Hex Nyloc x 6mm thick	1

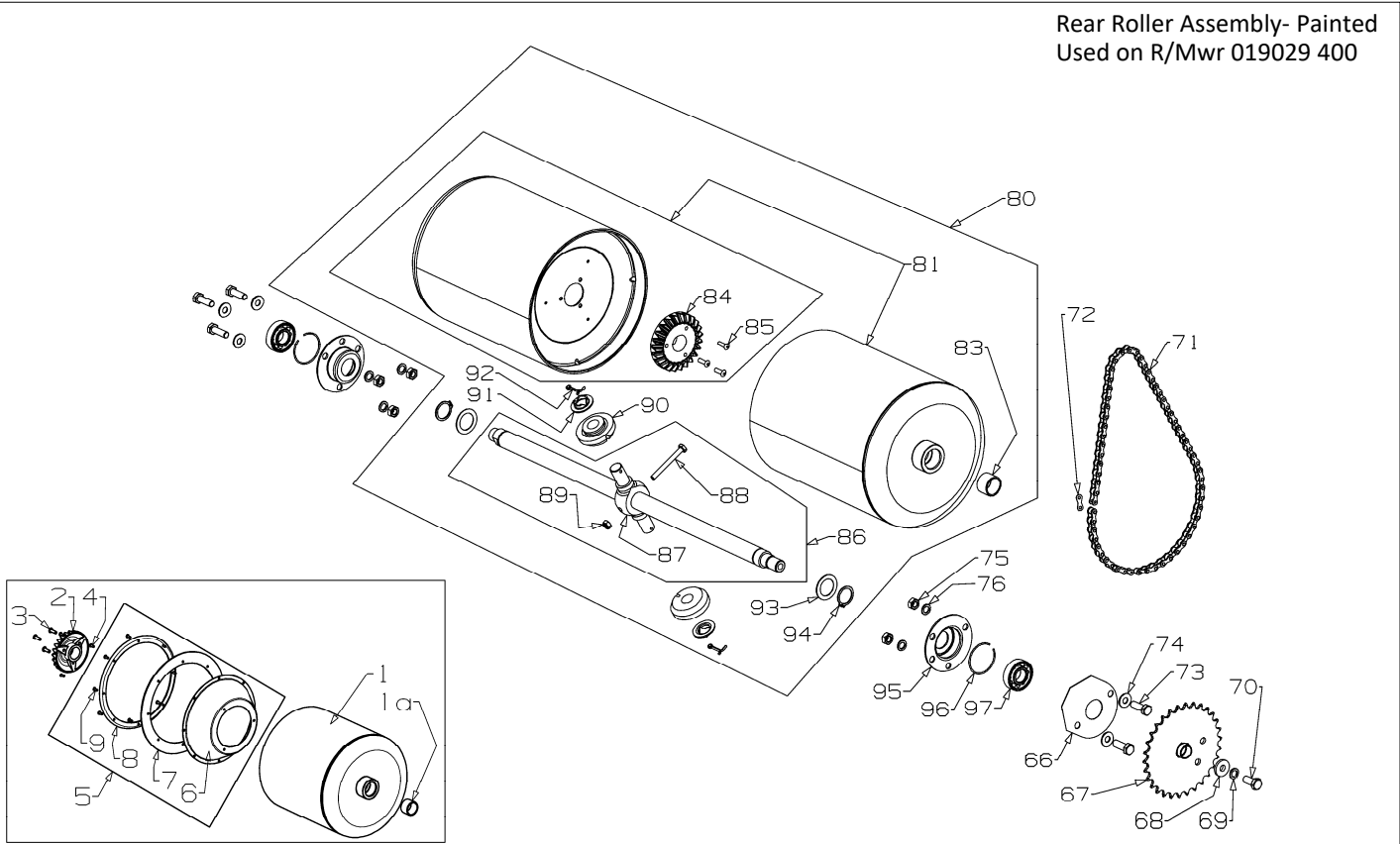
When ordering spares: PLEASE QUOTE PART NUMBER & Description, NOT illustrated number. Item Qty = 1 per part unless stated differently.
BOLD TEXT = Assemblies. Text starting with * = items included in the assemblies & may not be available as a spares item.
Determine the left hand or right hand sides by standing in the operating position (standing at the handle).



Item	Part No	Description	Qty	Item	Part No	Description	Qty
27	731583	Cover- Trans, 400 EU Green	1	51	031831	Lever- Clutch	1
27a	503429	*Rivet Pop 3.2 x 4.8 73AS4-3	4	52	031845	Spring- Clutch	1
27b	031907	*Cover- Trans Moulded, Green	1	53	031830	Lever Carrier- Clutch	1
27c	031908	*Cover- Trans, 400 EU Green	1	53a	501764	Nut, M6 Hex Nyloc x 6mm thick	1
28	503591	Screw, Set M6 x 12	4	53b	503591	Screw- Pan M6 x 12	1
29	501703	Washer, Flat 6 x 14 x 1.2	4	54	031843	Washer. Flat 16.5 x 75 x 3.0	1
30	031958	Spacer- Drive Shaft, 13mm	1	55	031840	Post- Clutch	1
31	032240	Clutch- Drive Assy V2	1	55a	031833	Bush- Back Plate	1
32	*005634	Clutch Spring	3	56	031988	Sprocket-11T, Clutch Disk	1
33	032241	Boss- Clutch, 19 Dia B&S	1	56a	031986	*Sprocket- Clutch Plate Assy	1
33	032242	Boss- Clutch, 20 Dia Honda	1	56b	031987	*Liner- Clutch Face Cork	1
34	501719	Screw, Grub M6 x 8	2	57	031963	Sprocket- 42T, Plate & Boss Assy	1
35	536178	Key- Engine 3/16" sq x 24 (B&S)	1	58	503901	Bearing, Ball 12x28x8 6001 2RSH	1
35	536012	Key- Engine 3/16" sq x 38 (Honda)	1	59	031965	Washer- Centralizing Brass	1
36	501213	Bearing, Ball 12x32x10 6201 2RS	1	60	503938	Bolt, M8 x 120 Hex	1
37	032235	Drum Assy, Clutch 400	17	61	501764	Nut, M6 Hex Nyloc x 6mm thick	1
38	503747	Washer, Spg 8	3	62	580160	Screw, Set M6 x 50 Hex	1
39	002834	Housing- Bearing	1	63	031842	Washer, Thrust	1
40	503273	Bearing-Ball 17x40x12 6203 2S	1	64	501793	Nut, M8 Hex Nyloc x 8mm thick	1
41	002818	Sprocket- 11T, Drive	1	76	031585	Cover- Chain Case, Green	1
42	501715	Screw, Set M8 x 15 x 1mm Pitch	1	77	501606	Washer, Flat 8 x 19 x 1.6	1
43	503747	Washer, Spg 8	1	78	503747	Washer, Spg 8	1
44	501606	Washer, Flat 8 x 18 x 1.6	1	79	501863	Screw Set, M8 x 12	1
45	501597	Screw, Set M8 x 20 Hex	3				
46	501602	Nut, M8 Hex	3				
48	501703	Washer, Flat 6 x 14 x 1.2	3				
49	500201	Washer, Spg 6	3				
50	503223	Screw, Set M6 x 16 HT8.8	3				

When ordering spares: PLEASE QUOTE PART NUMBER & Description, NOT illustrated number. Item Qty = 1 per part unless stated differently. **BOLD TEXT** = Assemblies. Text starting with * = items included in the assemblies & may not be available as a spares item. Determine the left hand or right hand sides by standing in the operating position (standing at the handle).

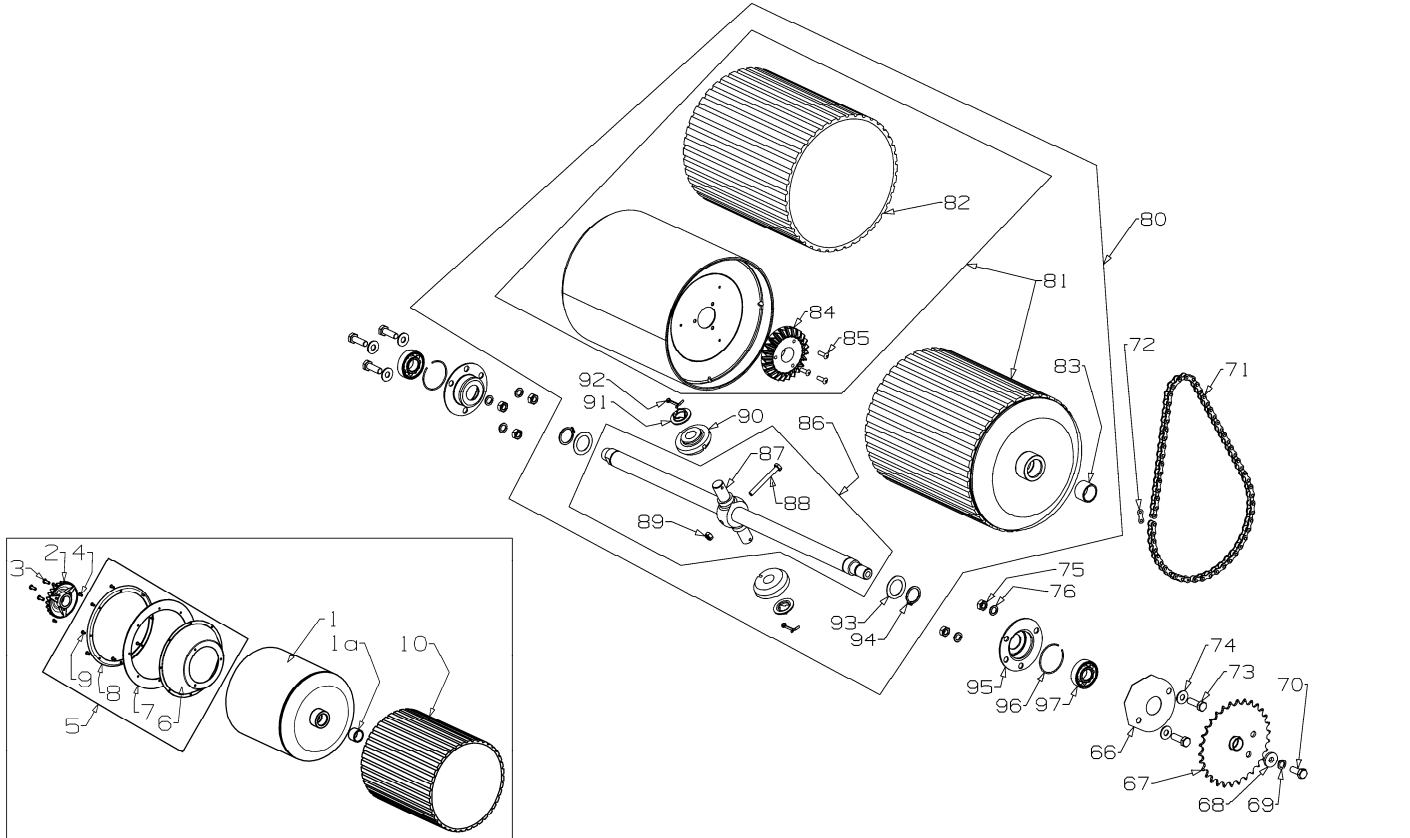
Rear Roller Assembly- Painted
Used on R/Mwr 019029 400



Item	Part No	Description	Qty	Item	Part No	Description	Qty
66	002618	Plate- Seal, Bearing	1	93	*002732	Washer-Flat, 22 x 40 x 2	2
67	002604	Sprocket & Boss Assy, Rear Roller	1	94	*007260	Circlip- 7/8" ext	2
68	503872	Washer, Flat 8 x 20 x 3.0	1	95	*000409	Housing-Bearing	2
69	503747	Washer, Spg 8	1	96	*004292	Ring- Bearing Housing	2
70	501717	Screw, Set M8 x 20 x 1mm Pitch	1	97	*503273	Bearing-Ball 17x40x12 6203 2S	2
71	004929	Chain, 3/16" x 1/2, 40P	1	031917 Roller- Rear, Half LH 400 Black			
72	*731971	Link, Chain 1/2	1	1	002698	Roller- Rear, Half (Black) 400	1
73	501597	Screw, Set M8 x 20	5	1a	007616	Bush- Rear Roller	1
74	501606	Washer, Flat 8 x 19 x 1.6	5	2	002707	Gear- Bevel, 24T	1
75	501602	Nut, M8 Hex	5	3	503399	Rivet- Pop 4.8 x 12.7 73SS6-8	3
76	503747	Washer, Spg 8	5	4	503429	Rivet- Pop 3.2 x 4.8 73AS4-3	3
80	031916	Roller- Rear, Assy (Black) 400	1	5	002714	Rear Roller Seal Assembly	1
81	*002698	Roller- Rear, Half (Black) 400	2	6	004845	*Carrier- Seal, Rear Roller	1
83	*007616	*Bush- Rear Roller	1	7	004847	*Seal- Rear Roller	1
84	*002707	*Gear-Bevel, 24t	1	8	004846	*Ring- Support, Rear Roller	1
85	*503399	*Rivet-Pop, 4.8 x 13 73 SS 6-8	3	9	503429	*Rivet- Pop 3.2 x 4.8 73AS4-3	8
86	*004834	Spindle- Rear Roller, 400	1				
87	*008943	*Carrier- Bevel Pinion	1				
88	*567292	*Bolt-Hex M6 x 55 HT 8.8	1				
89	*501764	*Nut, M6 Hex Nyloc x 6mm thick	1				
90	*002708	Pinion-Bevel, 14T	2				
91	*008944	Collar	2				
92	*007473	Split Pin, 3.0dia x 30	2				

When ordering spares: PLEASE QUOTE PART NUMBER & Description, NOT illustrated number. Item Qty = 1 per part unless stated differently.
BOLD TEXT = Assemblies. Text starting with * = items included in the assemblies & may not be available as a spares item.
Determine the left hand or right hand sides by standing in the operating position (standing at the handle).

Rear Roller Assembly- Sleeved



Item	Part No	Description	Qty	Item	Part No	Description	Qty
66	002618	Plate- Seal, Bearing	1	92	*007473	Split Pin, 3.0dia x 30	2
67	002604	Sprocket & Boss Assy, Rear Roller	1	93	*002732	Washer-Flat, 22 x 40 x 2	2
68	503872	Washer, Flat 8 x 20 x 3.0	1	94	*007260	Circlip- 7/8" ext	2
69	503747	Washer, Spg 8	1	95	000409	Housing-Bearing	2
70	501717	Screw, Set M8 x 20 x 1mm Pitch	1	96	004292	Ring-Bearing Housing	2
71	004929	Chain, 3/16" x 1/2, 40P	1	97	503273	Bearing-Ball 17x40x12 6203 2S	2
72	*731971	Link, Chain 1/2	1	008713 Roller- Rear, Half LH 400 Sleeved			
73	501597	Screw, Set M8 x 20	5	1	002698	Roller- Rear, Half 400 Plain	1
74	501606	Washer, Flat 8 x 19 x 1.6	5	1a	007616	Bush- Rear Roller	1
75	501602	Nut, M8 Hex	5	2	002707	Gear- Bevel, 24T	1
76	503747	Washer, Spg 8	5	3	503399	Rivet- Pop 4.8 x 12.7 73SS6-8	3
80	008953	Roller- Rear, Assy (Sleeved) 400	1	4	503429	Rivet- Pop 3.2 x 4.8 73AS4-3	3
81	*031951	Roller- Rear, Half (Sleeved) 400	2	5	002714	Rear Roller Seal Assembly	1
82	*004618	Sleeve- Rubber, Rear Roller 400	1	6	004845	*Carrier- Seal, Rear Roller	1
83	*007616	Bush- Rear Roller	1	7	004847	*Seal- Rear Roller	1
84	*002707	Gear-Bevel, 24t	1	8	004846	*Ring- Support, Rear Roller	1
85	*503399	Rivet-Pop, 4.8 x 13 73 SS 6-8	3	9	503429	*Rivet- Pop 3.2 x 4.8 73AS4-3	8
86	*004834	Spindle-Rear Roller Assy 400	1	10	004618	Sleeve- Rubber, Rear Roller 400	1
87	*008943	*Carrier-Bevel Pinion	1				
88	*567292	*Bolt-Hex M6 x 55 HT 8.8	1				
89	*501764	*Nut, M6 Hex Nyloc x 6mm thick	1				
90	*002708	Pinion-Bevel, 14T	2				
91	*008944	Collar	2				

When ordering spares: PLEASE QUOTE PART NUMBER & Description, NOT illustrated number. Item Qty = 1 per part unless stated differently. **BOLD TEXT** = Assemblies. Text starting with * = items included in the assemblies & may not be available as a spares item. Determine the left hand or right hand sides by standing in the operating position (standing at the handle).